

ASR-News

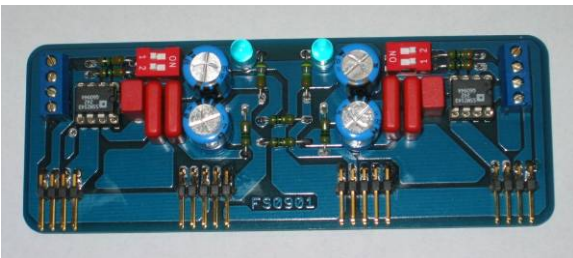
since December 2001 improved equipment:

* New ASR Design remote control made full milled from Corian with mechanical switches with perceptible click, to solid metal buttons and a flat lithium battery for long life span.



* New ASR power cable "**ASR Magic Cord**" for higher dynamics with larger wirings, double shielding, transparent coat in silver optics, more flexible.

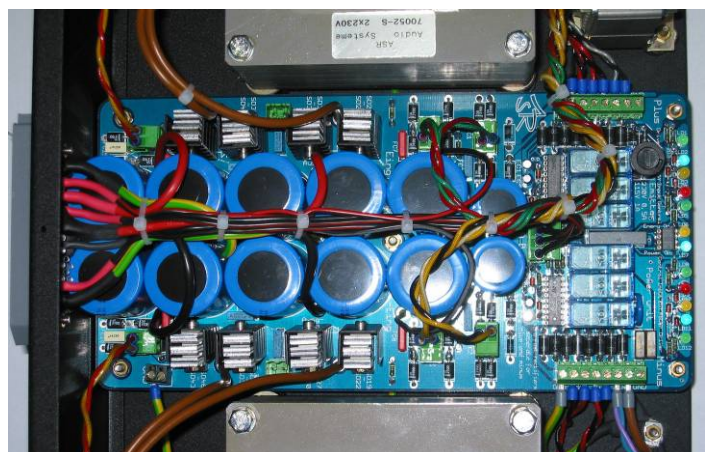
* New circuit board for the **balanced input** with special designed chip and adjustable input impedance with Dip switch between 1 and 10 K.



* New, more solid terminal clamps with turning toggle for **Emitter I** similarly as with emitter II. The picture shows left the EM II, right the EM I terminals

* The power supply unit has been equipped with **improved transformers** and new PCB board. The two transformers are **switched** separately with **6 relays** from energy saving to **full power mode**.

All **8 voltages** and the operation modes can be controlled with **12 Leds** direct behind the front plate. On request an active filter with an high current fuse is available.



* New **rotary pulse encoder** for the volume control with more gentle run.

new since September 2003

- * new **microcontroller** with built in program memory result in more stable operation.

new since March 2004

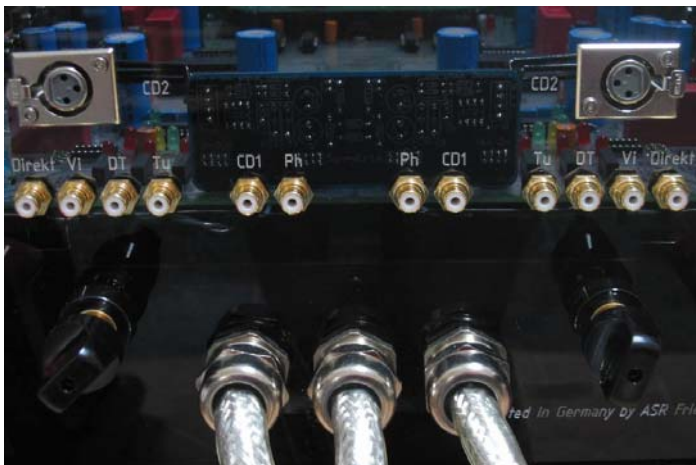
- * high frequency uncoupling of the heat sinks. This improves the dissolution of detail and the precision of the sound picture.

New since October 2004

- * modified **filter** in **the battery** power supply. Thus devices with Battery power units play clearly more **dynamically** and still with **more punch** in the low region.

New since January 2005

Emitters with **balanced input** have a new engraftment for the inputs with Ph,CD1,CD2,Tu,TA,Vi.



- * The anyway not usable "**CD**" RCA socket, which is connected with the positive input of the balanced receiver, is void thereby.

- * A new **substantial strain relief** made of **metal** for the cables from the main unit to the power supplies makes the emitter more attractive also on the backside.

- * The **connecting cable** to the PSU have got a new **low loss** isolation.

- * The Emitter power supplies had been equipped with a **low-loss high load fuse** and a new, bigger **21 Amp AC power plug** for the AC cable.

- * As a result of the lower losses in the AC connection the sound of the Emitters has got more **dynamic**, more **precision**, and the bass has got more **punch**.



- * On **demand** the Emitters can be equipped with **WBT** RCA inputs and loudspeaker terminals

- * **Chrome** buttons and feet instead of golden ones will be available with **no extra cost**.

- * The **PCB boards** of the Transformer normal and the Battery power supplies have got an **optimized layout** as well as **rounded corners**.

- * The **high frequency compensation** of the output stages in the Emitter can be increased with a switch on the mainboard. This increases the **stability** with difficult loads like high-capacitive cables or **impedance critical** loudspeakers. The **sound** becomes at the same time a little bit **smoother**. By the way also the sound in the **burn-in time** can be arranged somewhat more pleasant.

At High End 2005 Show in Munich we presented :

The new Emitter Exclusive version 2005 !

The **ASR Emitter Exclusive** are equipped with complete new cases for the power supplies, a new very high-quality patch cord and transistor bars made out of brass.

The **ASR Emitter II Exclusive** has got new heat sinks.

The **new cases** with the dimensions 460 x 320x 160 mm are a little bit larger than the ones before, have **rounded edges** and are manufactured out of **stronger** and thus more **stable** sheet metal. The side parts are manufactured together with the base plate from one piece. The entire structure consists of fewer but more stable parts. The Ventilation openings form a ASR Logo.

Caused by **larger available space** the parts and pcb boards can be installed more separated from each other. Thus the **transmission** of fields and resonances are **reduced**. Also the Standby transformer is installed now lying instead of standing.

The new **ASR Emitter Exclusive** power cases are about 3 kg more heavily than the predecessors, the entire structure are clearly more stable and have lower resonances.

The new, clearly sturdier plugs originate from the industrial electronics and are supplied from the well known German manufacturer **Harting**.



The **Battery Power Supply** of the ASR Emitters Exclusive has got a complete new design :

The Batteries are mounted now at the rear wall. The main pcb board is positioned in front behind the front plate. The **charging transformer** is installed **central** lying in the equipment.

The control Leds can be seen from the front by the front plate window. The internal wiring has become shorter. The new housing has by the new, more stable structure has it smaller resonances, and sounds clearly better than the previous version.



The amplifier part of the **ASR Emitter Exclusive** series has a solid transistor mounting bar made from **massive brass**.

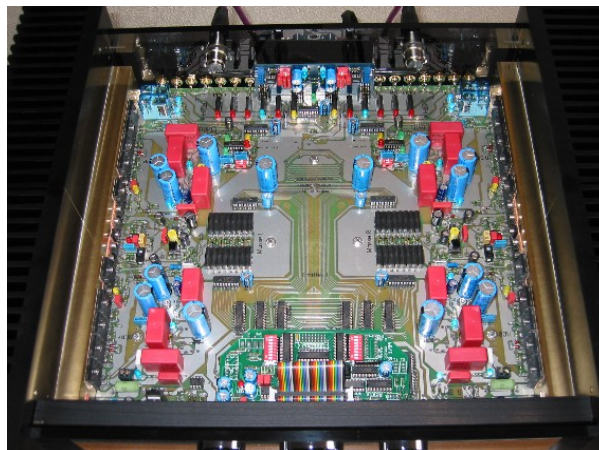
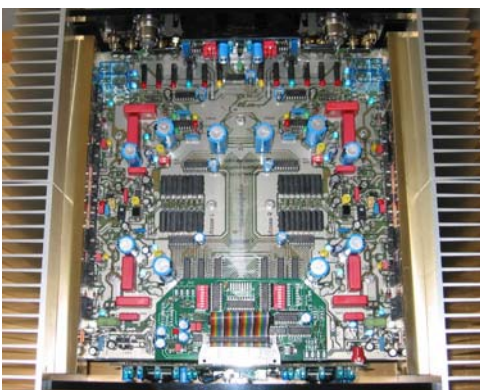
In the former models the bar has been made from black anodized aluminium. Brass is clearly heavier and has a substantially more harmonious resonance spectrum than aluminium.

Brass is therefore also the material for many music instruments !

The **ASR Emitter II Exclusive** are equipped with a new heat sinks with a changed, more rigid profile. By both changes the resonances in the structure of the **ASR Emitter II Exclusive** are lower.

The new ASR Emitter Exclusive sounds still more dynamic and more precise than the former models.

The new Brass **mounting bars** :



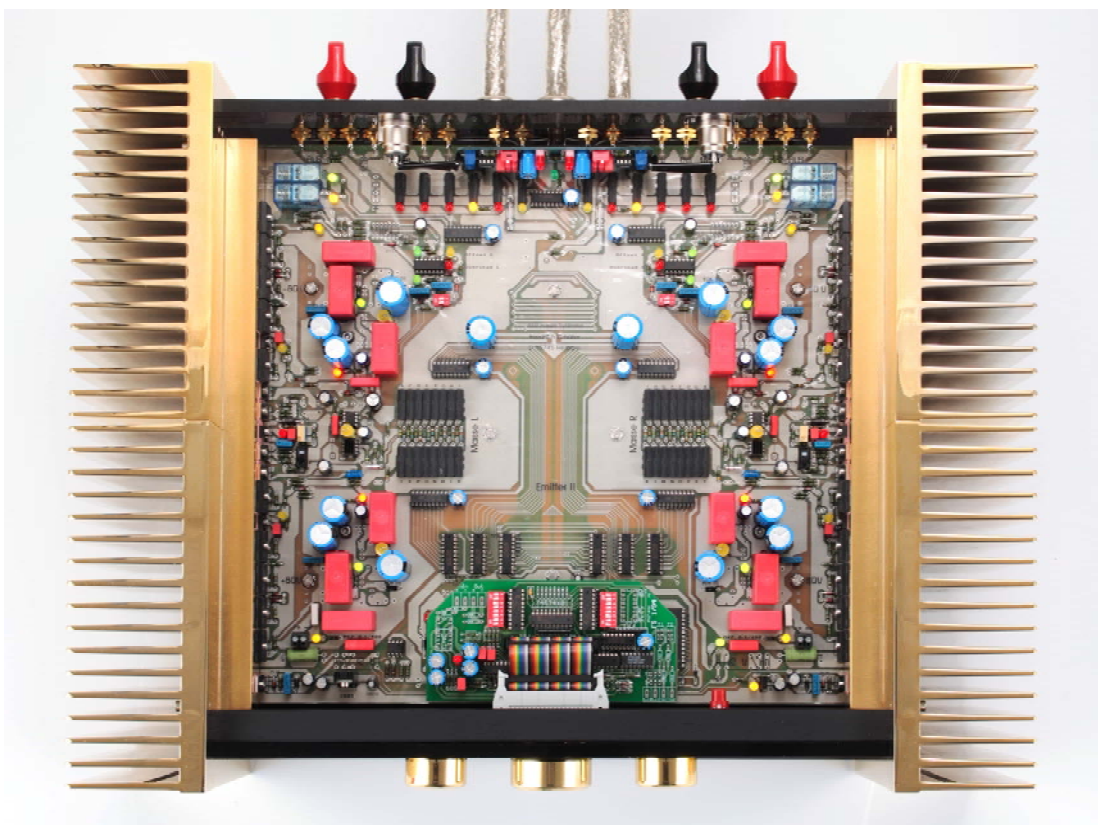
News January 2006

The **Basis Exclusive** power supply is now equipped with the **solid new case** and the professional **Harting plugs** that are used for the new Emitter Exclusive. By this the sound of the **improved Basis Exclusive** has become more sovereign and has got more details.

The **Emitter** standard models have been improved with some advantages of the Exclusive models :

The main units have the **brass mounting bars**, the new **power cases** and the **Harting plugs** of the Exclusive Version. The **Emitters Exclusive** are now equipped in series with the **active system filter** in the power supply unit.

The Emitter II Exclusive is available with **gold or chrome plated heat sinks** on request.



Chrome plated Heatsinks :



